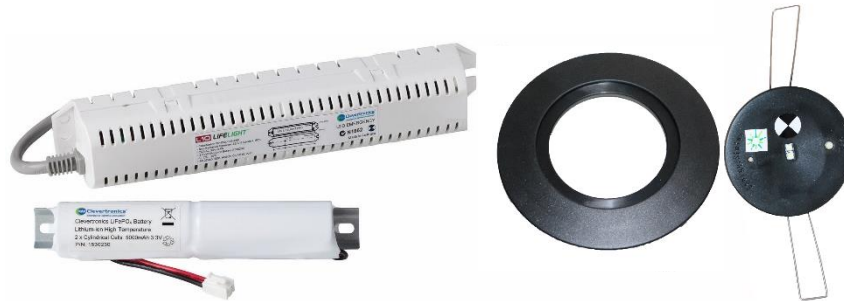


CLEVERTRONICS L10 MAINTAINED LIFELIGHT PRO RECESSED EMERGENCY, BLACK



PRODUCT INFORMATION

Catalogue Number	LLIFEM-PRO-BLK
MIC	AUT01310140002
Description	L10 Optimum Lithium Nanophosphate Maintained Lifelight PRO, High Performance, Recessed Emergency Light, Enabled with Clevertest Plus
Mounting	Recessed Ceiling
Dimensions L x W x H	232mm x 40mm x 40mm (Control Pack), 60mm Head Diameter (95mm with adaptor plate)
Ceiling hole cut-out	51mm, 85mm (with adaptor plate)
Minimum ceiling depth	200mm, 120mm (with adaptor plate)
Operating Mode	Maintained (LEDs permanently ON at 250mA - 182lm, with no switch control) Emergency mode (LEDs running at 550mA - 336lm)
Testing System	Clevertest Plus Enabled (Not activated by default)
Battery	Lithium Nanophosphate, 3.3V 5000mAh
Charging Method	Intelligent current limited constant voltage charger
Lamps(s)	2 x 3W LED (Lifetime warranty on the lamp head and loom assembly)
Operating Voltage	240V 50Hz
Power Consumption	2.4W (Standby), 4.7W (Max during 16 hour charge)
IP Rating	IP20
Operating Temperature	1° to 40°C (Ambient)
AS/NZ2293 Classification	C ₀ =D80 C ₉₀ =D80

REPLACEMENT PARTS

PART NUMBER	DESCRIPTION
1100871	Lifelight Pro Head Assbly, Rnd, Lge+Ring, LT, Blk, Gen2
1530230	Battery: 3.3V 5Ah. Li-ion, 200mm lead with Bracket
AUM01370040001 LLIFE-PRO-CKIT	Lifelight Pro, Control Only, L9, L10, OWC

The product details described in this document are current as at the version date of the document. We reserve the right to change product design, specifications or materials (Specifications) as part of our continuous improvement program. Please confirm the applicable Specifications at the time of placing your order