



EWFLED

CLEVERTRONICS Supalite, IP65 Weatherproof,
Emergency Floodlight, Trade Series



PRODUCT INFORMATION

| | |
|--------------------------|--|
| Part Number | EWFLED |
| MIC | AUE03520010001 |
| Description | Supalite IP65 Weatherproof Emergency Floodlight, Trade Series |
| Construction | Polycarbonate |
| Mounting | Surface Wall Mount (Hard Wired Supply Connection) |
| Dimensions L x W x H | Main Enclosure - 380mm x 190mm x 130mm Total Height Including LED Heads 310mm |
| Weight | 2.0kg |
| Operating Mode | Non-maintained |
| Testing System | Manual Test Switch |
| Battery | Lithium Iron Phosphate, 3.2V 3000mAh |
| Charging Method | Intelligent Current Limited Constant Voltage |
| Lamp(s) | 2 x LED Heads (Adjustable), 175lm Per Lamp Head |
| Operating Voltage | 220-240V AC; 50Hz |
| Power Consumption | 0.4W (Standby), 1.3W (Max) |
| IP Rating | IP65 |
| Operating Temperature | 0°C to 40°C |
| AS2293 Classification | C0=N/A C90=N/A |
| Applicable Standards | AS/NZS3820, CISPR15, AS/NZS2293.3 |
| Compliance Marking (RCM) | |

REPLACEMENT PARTS

| PART NUMBER | DESCRIPTION |
|-------------|------------------|
| 1560156 | Battery |
| 1100550 | LED Head |
| 8002976 | Emergency Driver |

The product details described in this document are current as at the version date of the document. We reserve the right to change product design, specifications or materials (Specifications) as part of our continuous improvement program. Please confirm the applicable Specifications at the time of placing your order.

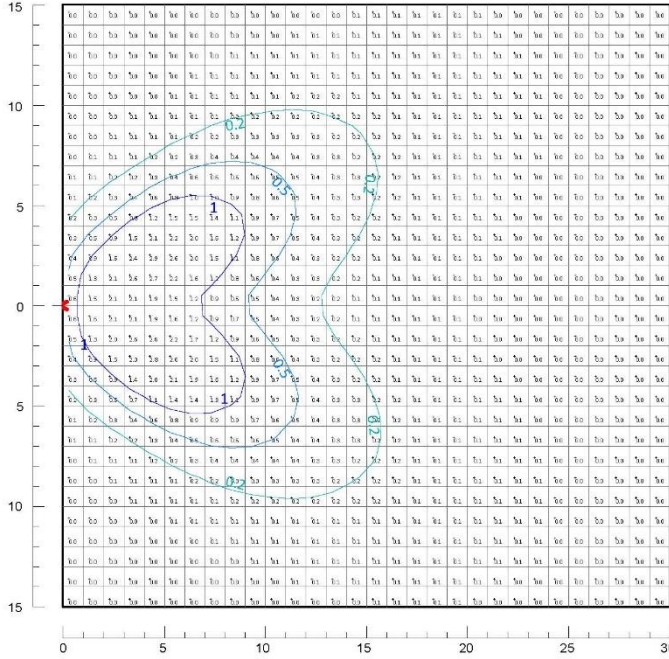


EWFLED

CLEVERTRONICS Supalite, IP65 Weatherproof, Emergency Floodlight, Trade Series

Isolux plot and value table for a 30m x 30m area serviced by a Weatherproof Supalite with each LED lamp head tilted down 30°, rolled out 30°. The Weatherproof Supalite mounted on the wall at a height of 3m and 6m (values in lux).

EWFLED @ 3m



EWFLED @ 6m

