

**CLEVERTRONICS LP LED SUPALITE****PRODUCT INFORMATION**

Catalogue Number	CFLLED-DALI-BLK
Description	LP Premium Supalite LED Flood Unit, Surface Mounted Emergency Light, Black
Construction	Polycarbonate
Mounting	Surface Mounted, hard wired via terminal blocks
Dimensions L x W x H	Main enclosure - 282mm (W) x 137mm (H) x 64mm (D) Total height including LED Heads 225mm
Weight	1.3kg
Operating Mode	Non-maintained
Testing System	DALI Compatible
Battery	Lithium Iron Phosphate, 3.2V 6400mAh
Charging Method	Intelligent Current Limited Constant Voltage
Lamp(s)	2 x LED Heads (adjustable), 185lm per lamp head
Operating Voltage	240V AC; 50Hz
Power Consumption	0.4 Watts (Standby), 2.2 Watts (Max)
IP Rating	IP20
Operating Temperature	1°C to 40°C
AS2293 Classification	C ₀ =N/A C ₉₀ =N/A

REPLACEMENT PARTS

PART NUMBER	DESCRIPTION
1550230	BATT:LP 3.2V 6400mAh.200mm lead.Brkt.
8002390	PCA:LL-Pro L10 Driver 550mA .#CT10142-L5
1100955	LED Flood Lamp Head Ass, Cable & Cnnctr.
8003060	PCA: DALI Node #CT10629-Ax

DALI EM

LP LITHIUM IRON PHOSPHATE

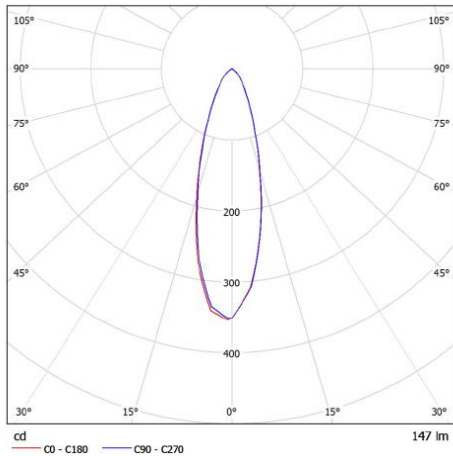
PREMIUM

PROVEN PROJECT PERFORMANCE

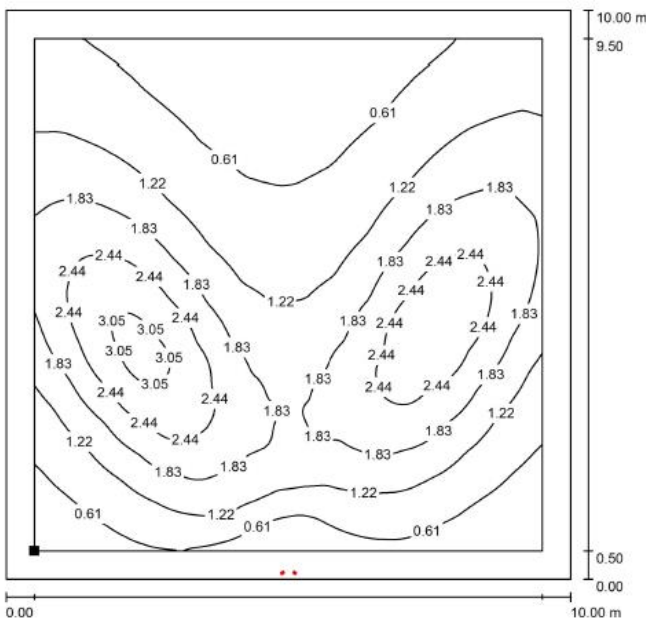
Spacing Guidance

Polar curve for a single LED lamp head

Luminous emittance 1:



Isolux plot and value table for a 10m x 10m area serviced by a Supalite with each LED lamp head tilted down 30°, rolled out 30°. The Supalite mounted on the wall at a height of 3m (values in lux).



0.65	0.56	0.46	0.37	0.32	0.29	0.28	0.31	0.34	0.41	0.54	0.67	0.78	0.84
0.77	0.67	0.54	0.43	0.37	0.33	0.32	0.35	0.40	0.49	0.63	0.79	0.91	0.98
0.91	0.80	0.63	0.51	0.42	0.38	0.36	0.41	0.46	0.58	0.75	0.95	1.07	1.14
1.08	0.96	0.77	0.60	0.49	0.43	0.42	0.46	0.54	0.69	0.89	1.12	1.24	1.28
1.28	1.15	0.93	0.72	0.58	0.50	0.48	0.53	0.62	0.82	1.07	1.33	1.44	1.43
1.52	1.38	1.13	0.86	0.67	0.58	0.56	0.61	0.73	0.97	1.27	1.55	1.66	1.58
1.78	1.64	1.37	1.04	0.79	0.68	0.64	0.70	0.85	1.15	1.51	1.80	1.89	1.73
2.04	1.94	1.65	1.25	0.95	0.78	0.74	0.82	1.00	1.36	1.78	2.06	2.10	1.90
2.29	2.25	1.97	1.50	1.12	0.92	0.86	0.95	1.17	1.60	2.07	2.33	2.27	1.96
2.49	2.57	2.31	1.79	1.32	1.07	0.99	1.10	1.36	1.86	2.35	2.56	2.39	1.97
2.63	2.86	2.64	2.10	1.54	1.23	1.14	1.26	1.56	2.12	2.60	2.72	2.44	1.91
2.65	3.02	2.92	2.38	1.76	1.40	1.30	1.41	1.75	2.33	2.77	2.77	2.40	1.79
2.53	3.05	3.11	2.65	2.00	1.59	1.44	1.58	1.94	2.49	2.82	2.69	2.22	1.58
2.33	2.92	3.21	2.79	2.19	1.75	1.59	1.73	2.06	2.50	2.80	2.50	1.99	1.38
1.99	2.62	3.06	2.88	2.33	1.90	1.73	1.87	2.18	2.54	2.54	2.20	1.66	1.14
1.69	2.26	2.78	2.76	2.37	2.00	1.77	1.92	2.15	2.34	2.31	1.90	1.42	0.95
1.37	1.85	2.36	2.55	2.27	1.98	1.80	1.87	2.00	2.15	1.97	1.56	1.15	0.77
1.07	1.47	1.92	2.21	2.03	1.77	1.68	1.62	1.71	1.81	1.61	1.25	0.91	0.62
0.82	1.13	1.51	1.79	1.72	1.53	1.41	1.28	1.35	1.43	1.24	0.95	0.69	0.48
0.62	0.86	1.14	1.38	1.37	1.17	0.82	0.96	1.04	1.05	0.91	0.69	0.50	0.35
0.46	0.61	0.83	0.98	0.98	0.64	0.41	0.49	0.74	0.76	0.64	0.49	0.36	0.25

DALI EM

LP

LITHIUM IRON
PHOSPHATE

PREMIUM

PROVEN PROJECT PERFORMANCE