



CFLLED-BLK

CLEVERTRONICS LP LED SUPALITE - BLACK



PRODUCT INFORMATION

Part Number	CFLLED-BLK
MIC	AUE02310050001
Description	LP Premium LED Supalite Flood Unit, Surface Mount Emergency Light, Black
Construction	Polycarbonate
Mounting	Surface Wall Mount & supplied with flex and plug (the flex and plug can be removed to allow for a hard-wired connection)
Dimensions	Main enclosure - 282mm (W) x 137mm (H) x 64mm (D) Total height including LED Heads 225mm
Weight	1.3kg
Operating Mode	Non-maintained
Testing System	Clevertest Plus Enabled (Not activated by default)
Battery	Lithium Iron Phosphate, 3.2V 6400mAh
Charging Method	Intelligent Current Limited Constant Voltage
Lamp(s)	2 x LED Heads (adjustable), 185lm per lamp head
Operating Voltage	240V AC; 50Hz
Power Consumption	0.4 Watts (Standby), 2.7 Watts (Max)
IP Rating	IP20
Operating Temperature	1°C to 40°C
AS2293 Classification	C ₀ =N/A C ₉₀ =N/A
Applicable Standards	AS/NZS3820, CISPR15, AS/NZS2293.3
Compliance Marking (RCM)	

REPLACEMENT PARTS

PART NUMBER	DESCRIPTION
1550230	BATT:LP 3.2V 6400mAh.200mm lead.Brkt.
1100956	LED Flood Lamp Head Ass, Cable & Ctr, Left, Blk
1100957	LED Flood Lamp Head Ass, Cable & Ctr, Right, Blk
8002953	Driver Pack: PCA: xFLLED #CT10142-L9 250-550mA

The product details described in this document are current as at the version date of the document. We reserve the right to change product design, specifications or materials (Specifications) as part of our continuous improvement program. Please confirm the applicable Specifications at the time of placing your order



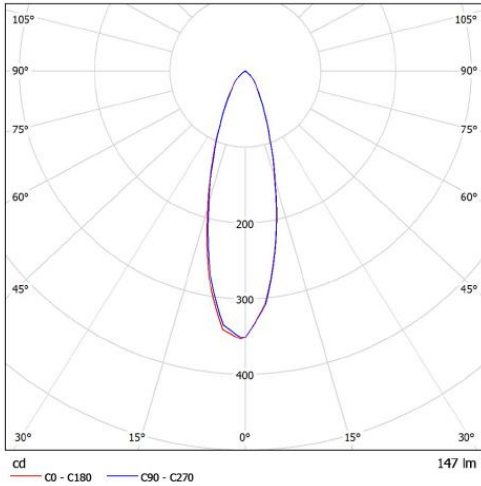
CFLLED-BLK

CLEVERTRONICS LP LED SUPALITE - BLACK

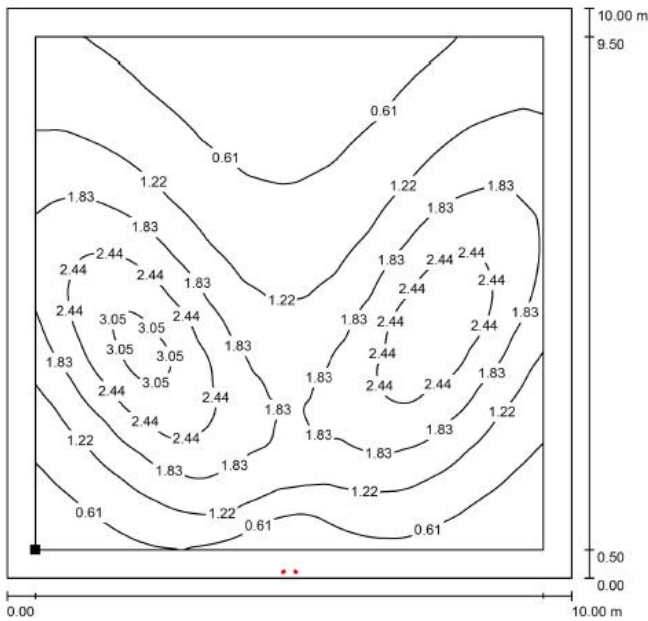
Spacing Guidance

Polar curve for a single LED lamp head

Luminous emittance 1:



Isolux plot and value table for a 10m x 10m area serviced by an LFLLED with each LED lamp head tilted down 30°, rolled out 30°. LFLLED mounted on the wall at a height of 3m (values in lux).



0.65	0.56	0.46	0.37	0.32	0.29	0.28	0.31	0.34	0.41	0.54	0.67	0.78	0.84
0.77	0.67	0.54	0.43	0.37	0.33	0.32	0.35	0.40	0.49	0.63	0.79	0.91	0.98
0.91	0.80	0.63	0.51	0.42	0.38	0.36	0.41	0.46	0.58	0.75	0.95	1.07	1.14
1.08	0.96	0.77	0.60	0.49	0.43	0.42	0.46	0.54	0.69	0.89	1.12	1.24	1.28
1.28	1.15	0.93	0.72	0.58	0.50	0.48	0.53	0.62	0.82	1.07	1.33	1.44	1.43
1.52	1.38	1.13	0.86	0.67	0.58	0.56	0.61	0.73	0.97	1.27	1.55	1.66	1.58
1.78	1.64	1.37	1.04	0.79	0.68	0.64	0.70	0.85	1.15	1.51	1.80	1.89	1.73
2.04	1.94	1.65	1.25	0.95	0.78	0.74	0.82	1.00	1.36	1.78	2.06	2.10	1.90
2.29	2.25	1.97	1.50	1.12	0.92	0.86	0.95	1.17	1.60	2.07	2.33	2.27	1.96
2.49	2.57	2.31	1.79	1.32	1.07	0.99	1.10	1.36	1.86	2.35	2.56	2.39	1.97
2.63	2.86	2.64	2.10	1.54	1.23	1.14	1.25	1.56	2.12	2.60	2.72	2.44	1.91
2.65	3.02	2.92	2.38	1.76	1.40	1.30	1.41	1.75	2.33	2.77	2.77	2.40	1.79
2.53	3.05	3.11	2.65	2.00	1.59	1.44	1.58	1.94	2.49	2.82	2.69	2.22	1.58
2.33	2.92	3.21	2.79	2.19	1.75	1.59	1.73	2.06	2.50	2.80	2.50	1.99	1.38
1.99	2.62	3.06	2.88	2.33	1.90	1.73	1.87	2.18	2.54	2.54	2.20	1.66	1.14
1.69	2.26	2.78	2.76	2.37	2.00	1.77	1.92	2.15	2.34	2.31	1.90	1.42	0.95
1.37	1.85	2.36	2.55	2.27	1.98	1.80	1.87	2.00	2.15	1.97	1.56	1.15	0.77
1.07	1.47	1.92	2.21	2.03	1.77	1.68	1.62	1.71	1.81	1.61	1.25	0.91	0.62
0.82	1.13	1.51	1.79	1.72	1.53	1.41	1.28	1.35	1.43	1.24	0.95	0.69	0.48
0.62	0.86	1.14	1.38	1.37	1.17	0.82	0.96	1.04	1.05	0.91	0.69	0.50	0.35
0.46	0.61	0.83	0.98	0.98	0.64	0.41	0.49	0.74	0.76	0.64	0.49	0.36	0.25